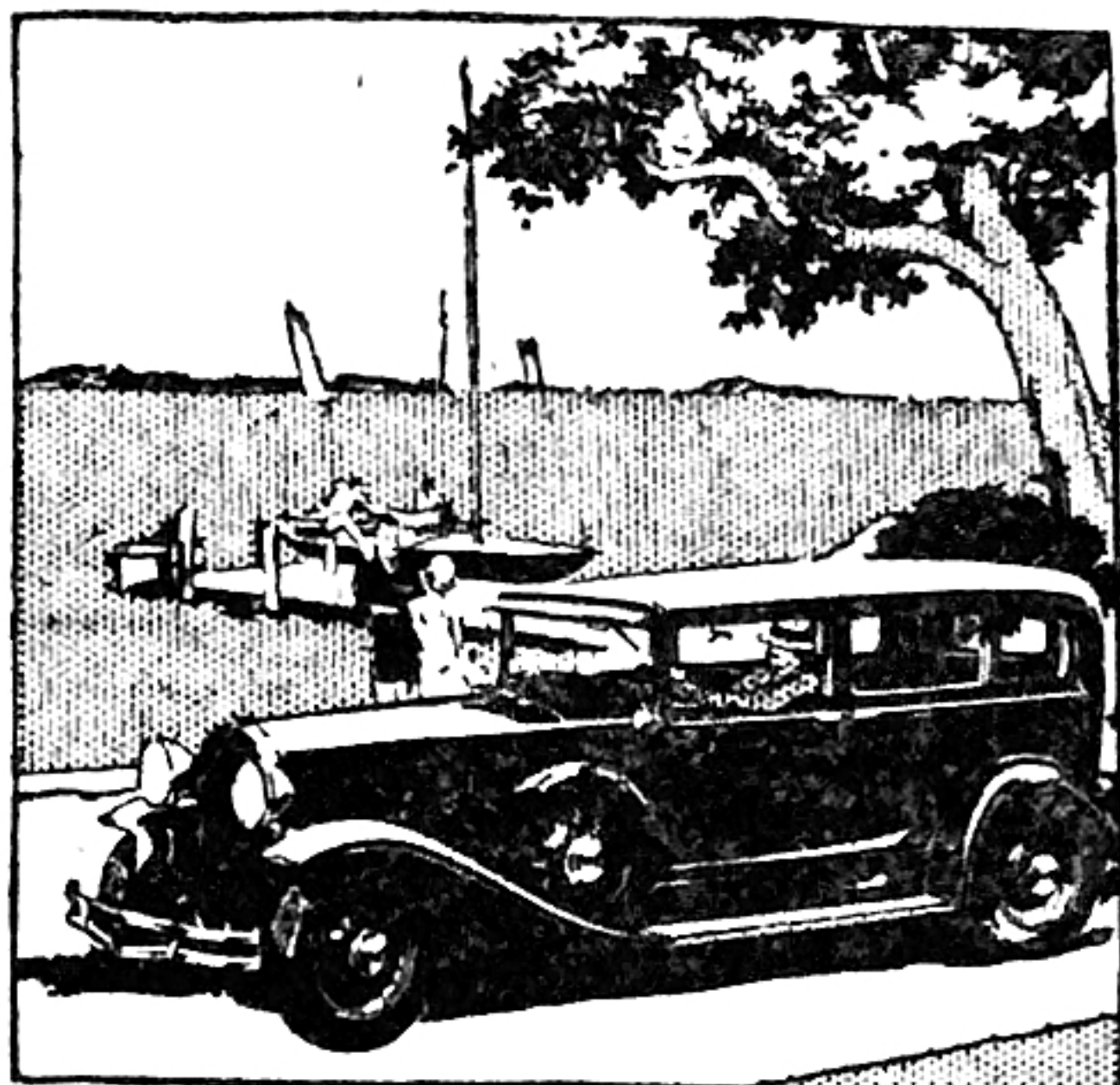


HUDSON'S *Great 8*

AN ENTIRELY NEW TYPE

*It sweeps
aside
High Cost
on*



EIGHT-CYLINDER QUALITY

With all its supreme performance, Hudson is surprisingly economical of fuel and tires. And it is engineered to low maintenance cost. Thousands of former "Six" owners are delighting in its reasonable cost of operation and upkeep. Among Eights it establishes a new scale of low ownership costs.

You have supremacy in fast get-away. You level hills with the ease of coasting. In crowded traffic you rarely need touch the gears. From standing start up to the top ranges of silky smooth speed, and back again to the soft instantaneous stopping action of the brakes, you will find the same effortless ease in performance.

Come take a ride. The charm of distinctive performance, riding ease and dependability that you find will question the wisdom or need of paying more for any car.

PRICES

Standard Length Chassis:

\$1050 COACH—Coupe, \$1100; Standard Sedan, \$1150; Roadster, \$1200; Phaeton, \$1300; Sunsedan, \$1335.

Long Wheelbase:

5-Pass. Touring Sedan, \$1250; Brougham, \$1295; 7-Pass. Phaeton, \$1500; 7-Pass. Sedan, \$1650.

Prices f. o. b. Detroit, Factory

Standard Equipment Includes:

Four 2-way shock absorbers; radiator shutters; starter on dash; electrolock; electric gauge for fuel and oil on dash; tire lock and luggage carrier.

A WIDE CHOICE OF COLORS AT NO EXTRA COST

Matta Motor Co.

1239 Braddock Avenue

Braddock, Pa.